

Legislative Apportionment Testimony
Stacey Abenstein
Field Director, NJ11th for Change
February 2, 2022

My name is Stacey Abenstein, a 30-year resident of Livingston and the Field Director for NJ 11th for Change, an unaffiliated grassroots group dedicated to advocating for all people of New Jersey's 11th Congressional District through outreach and education. As our focus is Morris and Essex Counties, I have spent many hours analyzing the municipalities in these counties and would like to share my conclusions and map with you.

There are two growing communities in Morris County that deserve a strong voice and representation: Latinx and AAPI. You have heard from these groups in previous sessions, but I'd like to stress the importance of grouping together towns with common interests. After starting with core towns that represent these groups, rearranging a bit and using other surrounding towns to balance the districts, I drew a map with two competitive districts with strong minority or "global majority" representation. In LD26, the voting age population (VAP) would be more than a third global majority and more than 20% Latinx. In LD25, VAP would be almost a third global majority and nearly 18% AAPI.

Moving east to Essex County, my map includes a West Essex district, LD27, heavily populated by our historically Jewish communities. As I am not sure you have access to demographic information on religion, I am including a map from a study recently done by The Jewish Federation of Metrowest in conjunction with Brandeis University showing the dense population of Jews in West Essex. While the high concentration of Jews started in Eastern Essex, the community moved to the suburbs in the 1960's. In fact, I belong to Temple B'nai Abraham, a congregation that started in Newark in 1853, and thrived there through the

1960's, relocating to Livingston in 1973 after the migration of Jews to the suburbs. With antisemitism and hate crimes on the rise in NJ, it is important this group has strong influence in one district with representatives who can advocate for the needs of this large community.

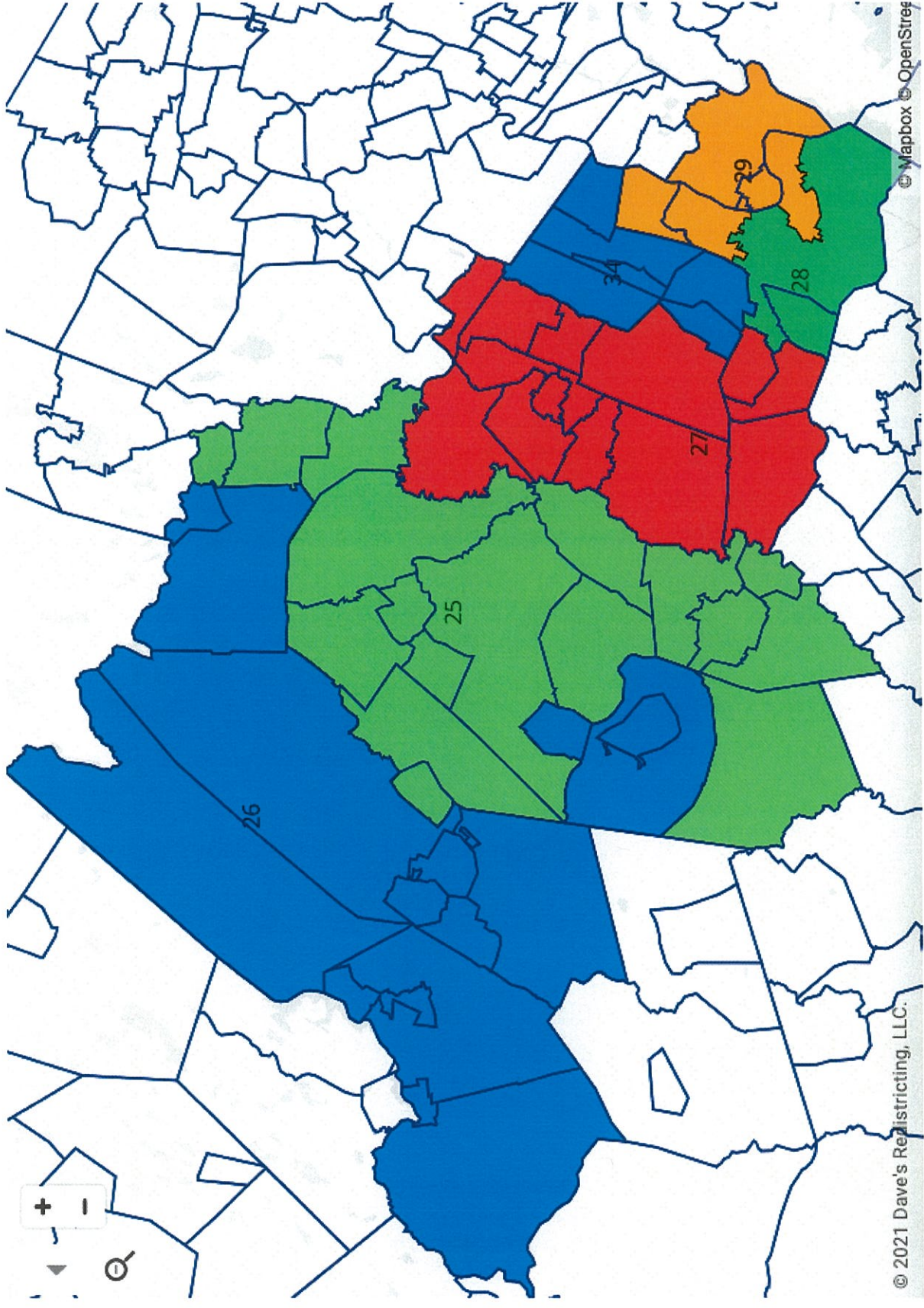
My version of the diverse LD34 eliminates Clifton but maintains the 37% global majority currently present in a compact, Northeast Essex only district. The new LD29 creates a majority Latinx district, which is not the case now, with the help of Belleville and the West Hudson County towns of Kearney, Harrison, and East Newark. My version of LD28 would continue to be majority Black and representation should reflect that majority.

In conclusion, I respectfully request that you consider the new map I submitted. The Morris County districts are competitive and give a much needed voice to growing communities of interest. In Essex County, LD27 becomes a predominantly West Essex district, LD34 includes all Northeast Essex besides Belleville, which helps to create a new majority Latinx district in LD29. LD28 continues to be a majority Black district. The new districts are all well within the accepted deviation, compact, use county lines as a guide, and are competitive wherever possible. Additionally, 15/18 incumbents are written into their current districts. I received support for this map from Wind of the Spirit, an immigrant advocacy group based in Morristown.

Thank you for the opportunity to testify today. I have submitted this testimony, the Jewish Federation map, and the new legislative map and analysis for your consideration.

*Here is a link to the map on Dave's Redistricting:

<https://davesredistricting.org/join/1cea81d4-4b38-4475-9645-f2e8006da783>.



Current Essex/Morris Legislative Map

ID	Total Pop	Devation	Dem	Rep	Oth	Total VAP	White	Global Majority	Hispanic	Black	Asian	Native	Pacific
25	221158	-4.70%	49.36%	48.49%	2.15%	174207	67.45%	32.55%	19.86%	4.65%	7.22%	1.46%	0.08%
26	224643	-3.20%	45.73%	52.12%	2.15%	179363	71.46%	28.54%	9.04%	3.06%	15.38%	0.91%	0.10%
27	233842	0.76%	64.10%	34.24%	1.66%	180070	62.36%	37.64%	9.19%	14.49%	13.29%	0.78%	0.12%
28	254024	9.46%	80.59%	17.71%	1.70%	191494	20.86%	79.14%	18.75%	56.47%	5.09%	1.47%	0.17%
29	247047	6.45%	82.41%	15.89%	1.69%	192742	14.86%	85.14%	43.49%	35.85%	3.94%	1.79%	0.22%
34	235908	1.65%	80.00%	18.10%	1.89%	182601	28.64%	71.36%	23.77%	42.81%	5.97%	1.64%	0.16%

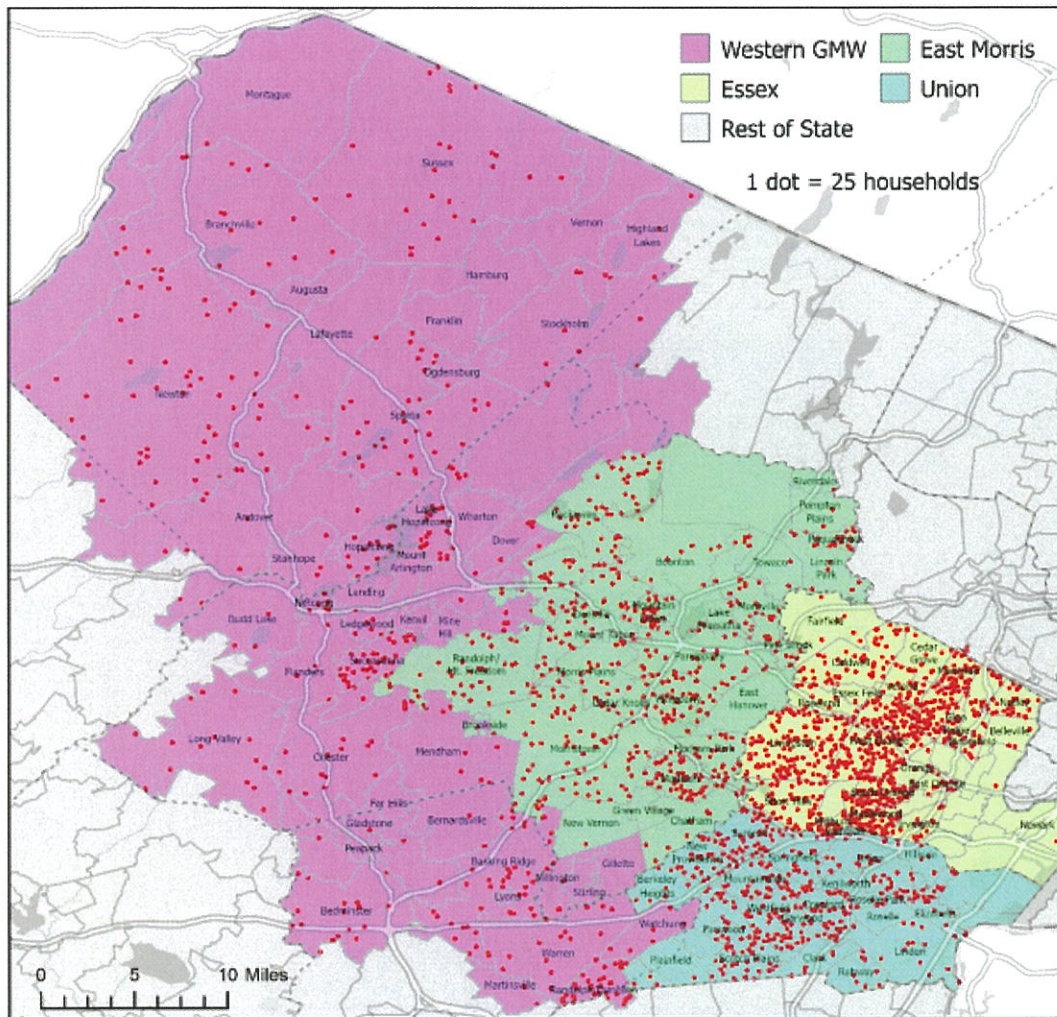
Suggested Essex/Morris Legislative Map

ID	Total Pop	Devation	Dem	Rep	Oth	Total VAP	White	Global Majority	Hispanic	Black	Asian	Native	Pacific
25	230,001	-0.89%	47.21%	50.84%	1.95%	182,578	69.91%	30.09%	8.22%	3.20%	17.71%	0.69%	0.09%
26	232,254	0.08%	49.27%	48.54%	2.19%	184,633	66.02%	33.98%	20.55%	5.37%	7.38%	1.46%	0.10%
27	230,174	-0.82%	65.43%	32.85%	1.73%	177,580	62.66%	37.34%	9.96%	14.83%	11.99%	0.82%	0.13%
28	236,913	2.08%	95.39%	3.42%	1.18%	180,373	4.90%	95.10%	15.56%	78.61%	2.27%	1.31%	0.16%
29	237,117	2.17%	73.17%	24.71%	2.12%	183,260	21.66%	78.34%	53.42%	14.83%	6.71%	2.14%	0.25%
34	236,647	1.97%	80.51%	17.68%	1.81%	183,309	31.14%	68.86%	17.74%	45.96%	5.89%	1.50%	0.17%

Incumbents

Elected Official	Party	Body	District	Town or Ward of Residence	Resides in New District
Bucco, Anthony	Republican	Senate	District 25	Boonton Twp	Yes
Bergen, Brian	Republican	Assembly	District 25	Denville	Yes
Dunn, Aura	Republican	Assembly	District 25	Mendham Boro	No
Pennacchio, Joseph	Republican	Senate	District 26	Rockaway Twp	Yes
Barranco, Christian	Republican	Assembly	District 26	Jefferson	Yes
Webber, Jay	Republican	Assembly	District 26	Morris Plains	Yes
Codey, Richard	Democrat	Senate	District 27	Roseland	Yes
Jasey, Mila	Democrat	Assembly	District 27	South Orange	Yes
McKeon, John	Democrat	Assembly	District 27	West Orange	Yes
Rice, Ronald	Democrat	Senate	District 28	Newark W32	Yes
Caputo, Ralph	Democrat	Assembly	District 28	Nutley	No
Tucker, Cleopatra	Democrat	Assembly	District 28	Newark S46	Yes
Ruiz, Teresa	Democrat	Senate	District 29	Newark N19	Yes
Pintor Marin, Eliana	Democrat	Assembly	District 29	Newark E9	Yes
Speight, Shanique	Democrat	Assembly	District 29	Newark C23	No
Gill, Nia	Democrat	Senate	District 34	Montclair	Yes
Giblin, Thomas	Democrat	Assembly	District 34	Montclair	Yes
Timberlake, Britnee	Democrat	Assembly	District 34	East Orange	Yes

Figure 1. Map of the Greater MetroWest Jewish community



- Each red dot represents 25 Jewish families.

TESTIMONY OF AMALIA DUARTE - 2/2/22

Thank you Commissioners for allowing me to speak this afternoon as part of the public testimony.

You have an incredibly important job ahead of you, and I appreciate the time and focus you are dedicating to this work. I appreciate the news that you will be releasing maps in advance of finalization to maintain full transparency as part of this process.

I also want to thank Chairman Jones for appointing Laura Matos to this Commission because representation matters, and that is my theme today.

I am on the Mendham Township Committee – serving in my second term – and am the Chair of the Elected Officials Caucus of the Morris County Democratic Committee. I am also a founding member of the Latino Caucus of the Morris County Democratic Committee.

Morris County, and our state, are changing and becoming rapidly more diverse, as reflected in the new Census figures. One in five New Jersey residents is Latino or 21%, and in Morris County 14% of residents are Latino.

Communities such as Dover, Parsippany and Morris Plains have large new immigrant populations. Communities such as the Mendhams and Washington Township do not. We are more rural communities and more homogenous in our populations.

Currently, most of Morris County is split between LD-25 and LD-26. And the districts as currently drawn, divide some communities of interest.

For example, Mendham Township and Dover are in the same district, LD-25. Yet these communities are vastly different.

Mendham Township is 6% Latino; has 92% owner-occupied homes; 74% of residents have attained a BA or higher; and there is a median household income of \$196,000

Dover by contrast - 68% Latino; has 46% owner-occupied homes; 19% have a BA degree or higher; and the median household income is \$72,000.

Part of the goal in creating voting districts is to align communities of interest who have common concerns, problems and needs. The purpose is to ensure those needs are addressed by their elected officials and aren't ignored.

Prior to the 2020 Census, the Strategic Plan for Morris County developed by the County Commissioners in 2018, recognizes the need to address the growing diversity of Morris County and issues related to public transportation and housing affordability, for example. Many people who work in Morris County cannot afford to live here.

It is important to ensure that the voices of new immigrants, the Latino and Asian communities are heard and not overwhelmed by being part of a district that does not share their concerns.

My simple recommendation is to keep communities of interest together, moving Parsippany and Morris Plains into LD-25 and perhaps moving out towns, such as the Mendhams, Bernardsville, Chesters, or Washington Township, which are very different in their makeup.

I believe this would lead to a district that elevates the voices of residents in those towns and gives them greater influence and forces more accountability of our elected officials.

Thank you!

TESTIMONY BY CLARIBEL CORTES
LEGISLATIVE APPORTIONMENT COMMISSION
WEDNESDAY, FEBRUARY 2, 2022

Thank you Judge Carchman, Chairman Jones, Chairman Barlas, and all of the members of the Legislative Apportionment Commission for allowing me to speak today. My name is Claribel Cortes, and I was recently elected to serve as Middlesex County Surrogate, I serve as the Vice-Chair of the NJ Hispanic Chamber of Commerce, but today I testify before you as a proud resident of North Brunswick, Middlesex County, and constituent in the 17th Legislative District. I appreciate the Commission's willingness to hear public testimony on what our legislative districts will look like for the next decade. This will determine how communities elect representatives who will not only fight for them to secure state resources but lay the foundation for communities to elect representatives that truly reflect the changing demographics of New Jersey for decades to come.

As I mentioned before, I am the current Surrogate of Middlesex County. Not only am I the first female Surrogate to represent Middlesex County, but I am also the first Latino to serve as a Constitutional Officer in the county. This is not only a personal point of pride, but a reflection of the diversity Middlesex County has embraced. Middlesex County is now almost 62% non-white, and our countywide elected leadership reflects that. Middlesex County also includes four of the 25 most diverse towns in the state based on the 2020 Census.

For the first time, all three constitutional offices are held by women, led by Sheriff Mildred Scott - the first African American Sheriff elected in the state of New Jersey, and the elected leaders on the Middlesex County Board of County Commissioners are majority female and reflect each of the growing minority groups throughout the county.

This is a powerful message and narrative to take with you as you consider redrawing the legislative boundaries for the districts within and that touch

Middlesex County. There were many positive pathways for greater representation for Middlesex County voters that were created over the course of the last decade in the currently enacted map – female representation grew from two (2) to five (5) women in the legislature, and there are now four (4) minority legislators representing Middlesex County. There is an opportunity for even more growth in representation if the legislative configurations stay relatively the same.

The 19th Legislative District, home to Assemblywoman Yvonne Lopez - one of ten Latino legislators in the state, currently includes Perth Amboy, Woodbridge, and Carteret. The 19th legislative district is a majority-minority district and 37% Latino. The growing voice of the Latino community since the last map was enacted allowed the opportunity for Assemblywoman Lopez to be elected in 2017. The diverse Latino communities in Perth Amboy, Woodbridge, and Carteret rely on representation in Trenton, and splitting these communities would do irreparable damage to the almost 90,000 Latinos currently living in the core of the current district.

The 18th legislative district, home to Assemblyman Sterley Stanley - the first South Asian legislator from Middlesex County, currently includes Edison and East Brunswick. One may argue to combine the Oak Tree Road corridor between Woodbridge and Edison, but doing this would drastically dilute the Latino community in the 19th legislative district and would cut the South Asian and Indian community in half for the first Indian legislator out of Middlesex County. The 18th legislative is currently almost 37% Asian.

The 16th legislative district, home to newly elected Assemblywoman Sadaf [SAA-DOFF] Jaffer[JA-FUR] - the first Muslim mayor to be elected in the United States and one of six South Asian legislators elected last year, includes South Brunswick which is 49% Asian. Its inclusion in the 16th legislative district increased the district's growing minority population created the opportunity for Sadaf [SAA-DOFF] Jaffer[JA-FUR] to be elected to the assembly. South Brunswick also plays a major role in hosting large cultural and religious gatherings where residents from Montgomery and Princeton gather to celebrate Diwali [D-WALL-E]

hosted in South Brunswick each year, and South Brunswick is home to the Islamic Center of Central Jersey - the large mosque and cultural center that has been serving the community for almost 40 years and is expanding to include a sports facility and multi-family senior housing. I urge you to keep South Brunswick in the 16th legislative district to strengthen the South Asian community's voice in the electoral process.

And in my hometown, currently in the 17th legislative district and named as one of the 25 most diverse towns in NJ, the 2020 Census revealed that North Brunswick is 26% Asian and almost 25% Latino. The Latino community in North Brunswick relies on the shopping and community programs available in New Brunswick. There is also a new train station being built in town that will connect North Brunswick to the downtown hub and hospital system in New Brunswick.

There will be other Middlesex community members who will join hearings over the next week to advocate to keep current communities of interest together and ensure a path for greater representation for years to come. I thank you for your time and your consideration, and I wish you luck on the apportionment process.

GOOD AFTERNOON EVERYONE,

MY NAME IS SYLVIA GONZALEZ AND I AM A SUPERVISOR IN THE FAIRVIEW PUBLIC SCHOOLS AND HAVE BEEN PART OF ITS ELEMENTARY EDUCATIONAL COMMUNITY FOR OVER 19 YEARS. FAIRVIEW IS LOCATED IN BERGEN COUNTY AND IS A SMALL BOROUGH THAT BORDERS HUDSON COUNTY. THIS TESTIMONY IS A PLEA FOR FAIRVIEW TO TRANSITION DISTRICTS THAT PARALLEL ITS GEOGRAPHY, AND VOTER DEMOGRAPHICS.

I HAVE DEEP ROOTED TIES TO THIS COMMUNITY. MY FAMILY HAS OWNED A BUSINESS ON ITS COMMERCIAL STRIP FOR OVER 39 YEARS AND WAS ONE OF THE FIRST LATINO OWNED ESTABLISHMENTS. I EVENTUALLY MOVED TO FAIRVIEW EIGHT YEARS AGO BECAUSE I FELT IT WOULD ENABLE ME TO BUILD PERSONAL RELATIONSHIPS WITH THE FAMILIES FROM OUR SCHOOL DISTRICT AND CREATE AN OUTREACH OF RESOURCES WITHIN THE COMMUNITY IN A LANGUAGE THAT MOST COULD UNDERSTAND.

TO HAVE FAIRVIEW TRANSITION DISTRICTS FROM DISTRICT 32, IN HUDSON COUNTY, TO DISTRICT 36, IN BERGEN COUNTY, **JUST MAKES SENSE**. OUR STUDENTS, FOR EXAMPLE, ARE TIED TO CLIFFSIDE PARK. THEY BEGIN THEIR EDUCATION IN FAIRVIEW AND CULMINATE IT WITH A HIGH SCHOOL GRADUATION IN CLIFFSIDE. FRIENDSHIPS ARE BUILT BETWEEN THE COMMUNITIES THAT LAST A LIFETIME.

OUR BUSINESS DISTRICT IS AN EXTENSION TO ONE ANOTHER GEOGRAPHICALLY-- TO THE POINT THAT YOU CAN NOT DISTINGUISH WHERE ONE TOWN BEGINS OR THE OTHER ENDS AND LOCAL BUSINESS OWNERS OFTEN HELP ONE ANOTHER AS NEIGHBORS OFTEN DO. THE DEMOGRAPHICS IN POPULATION MIRROR ONE ANOTHER AS WELL. THERE IS A HIGH POPULATION OF MINORITIZED GROUPS THAT HAVE BUILT A NETWORK TO OFTEN LEAN ON ONE ANOTHER TO ASSIST IN AFTER SCHOOL CARE OR CHILD DROP OFF AND PICK UP. HENCE, IT SHOULD BE A BERGEN COUNTY DISTRICT SO THAT RESOURCES LIKE RECREATION PROGRAMS AND SCHOOL PROGRAMS CAN BE INTERCHANGEABLE AND BENEFIT ALL STUDENTS.

FAIRVIEW IS NOT JUST A PLACE ON A MAP, IT IS A SMALL COMMUNITY I
CALL HOME AND BECAUSE OF THAT, I WANT WHAT IS BEST FOR IT.
TRANSITIONING TO DISTRICT 36 IS NOT ONLY LOGICAL BECAUSE OF THE
AFOREMENTIONED, BUT IT WILL SOLIDIFY THE COMMUNITY CONNECTION
THAT ALREADY EXISTS BETWEEN FAIRVIEW AND CLIFFSIDE PARK.

Thank you for the opportunity to speak with you all today.

Good Afternoon

Thank you, Chairperson Jones and Chairperson Barlas, Judge Carchman, and the members of the Legislative Reapportionment Commission for allowing me to testify.

My name is Bishop Paul Brown, and I am Senior Pastor of First Pentecostal Church in Neptune, NJ.

My church is located in the heart of the Midtown area, where Neptune meets Asbury Park. In fact, Oxonia Avenue is just a couple of blocks away from Ridge Avenue, where the town of Asbury Park begins.

I have been the pastor of First Pentecostal Church for over 30 years and a resident of Neptune for 37 years. I have been a Neptune Township Planning Board member for more than 15 years, and I currently serve as the chairperson.

Midtown is dear to my heart, and I have dedicated much time to community service in this area- serving the residents to the best of my ability.

Midtown has a concentration of people of color, as does the West Side of Asbury Park, where our two towns meet, and I ask you to keep that in mind when drawing the new legislative maps.

Midtown- specifically Springwood Ave/West Bangs was a thriving downtown where families lived, worked, and shopped, and famous people often frequented.

Upon the assassination of Dr. Martin Luther King, we saw what many towns experienced- riots and burning down of businesses and homes.

Asbury and Neptune are communities with a shared interest: investment in its people, particularly its' people of color.

I am so pleased to see that the Congressional Map has now reunited these two communities into the same district. We must be sure to keep these towns together to have representation that understands the importance of helping out the most vulnerable and investing in their well-being. I urge this Legislative Commission to keep Asbury Park and Neptune Township in the same Legislative District so those communities of interest can stay together. Thank you so much.

Thank you to Chairmen Jones and Barlas, to Judge Carchman, and to all the members of this commission for the opportunity to offer testimony. And a special welcome to newly named Commissioner Matos, I am delighted that you were appointed to this important role.

I am Mara Novak, co-Executive director (along with Leslie Bockol) of NJ 11th for Change. As a grassroots organization centered in Congressional District 11, we focus closely on the needs — and the demographics — of people living in our territory, including the formerly 10, now 8 LDs that make up our territory.

In addition to all the other factors I know you have to balance in the monumental task of redistricting, NJ 11th for Change urges you to create districts that take into account the changing demographics of our state's population. In our part of North Jersey we see significant growth particularly in the AAPI and Latino communities. We encourage you to consider these COI as you draw new districts to strengthen their voices.

There are significant and expanding AAPI populations in the CD 11 and CD 11 adjacent towns of Parsippany, Livingston, Millburn, Montville, Mountain Lakes, Boonton Township, as well as in Hanover and East Hanover. The Latino populations in Morristown, Dover, Morris Township, Wharton, Mine Hill, Rockaway Boro, Rockaway Township Roxbury, Mount Olive and Victory Gardens continue to grow rapidly as well.

New maps should be drawn to keep as many of these towns together as possible to give these communities of interest a larger voice.

At NJ 11th for Change, we prioritize government representation that is transparent, responsive, and accountable to all residents. The demographics of NJ are changing, and it is a disservice to our current voters if districts are drawn reflecting the demographics of the past, and that no longer accurately reflect the people who now live in them.

Thank you for the work you are doing here on this Commission.

From:
Sent: Wednesday, February 02, 2022 12:12 PM
To: OLSaideAPPC
Subject: From Web Form My written comments for the apportionment hearing

marc kline

Long Branch, New Jersey 07740
Monmouth Reform Temple

Thank you Judge Carchman, Chairman Jones, Chairman Barlas, and all of the members of the Legislative Reapportionment Commission for allowing me to come before you to weigh in and share my thoughts and concerns over the matter of legislative redistricting. I am a resident of Long Branch. I serve as Rabbi of Monmouth Reform Temple in Tinton Falls. Over the course of my 8 years in the area, I have helped create the Chaplaincy program for the Red Bank Police Department, serve as volunteer Rabbinic Chaplain for the four area Hackensack Meridian Hospitals (Bay Shore, Riverview, Jersey Shore, and Ocean), and am working with the Monmouth County Prosecutor's Office in co-creating their Chaplaincy program. Walking/working in a diverse world of religious traditions and as the Interfaith Chair for the Jewish Federation the Heart of New Jersey, I have loved the opportunity to see how important our shared relationships with our state officials plays out in ensuring that our communal efforts and our government voices are mutually supportive.

I share these credentials only to demonstrate that I am blessed to interact in the wider faith community that spans the 11th District. The relationships we forge allow us to share in our celebrations and concerns for the needs of the wider community. In large part, the reality that we have the ears and energy of the same state legislators has helped us galvanize program resources and support. It is because we are in "a" conversation with the state government that we have been able to both influence our Senator and Assembly People and communally affirm or respond to their interests, directions, and ideas. The diversity of religious traditions already rooted in common relationship and interest is of consequence in ensuring vibrant and healthy community dynamics. Because of our shared relationships in this District, we have been able to count on generations of elected officials participating in our work across the denominational lines, legitimizing our shared values and shared destinies. We lose this affirmation if the Districts are redrawn and we end up separated from each other.

I cannot ignore the impact that the shared voices of faith and government play out in creating programming for the community beyond the "faith" world. Our concerted efforts combatting hunger, homelessness, and lack of medical care; providing assistance enhancing education and social services in schools and agencies serving otherwise marginalized people; and promoting a return to the dignity and humanity guaranteed by our constitution and covenanted in our religious traditions. These efforts that stem from the shared experiences will fracture if we have to recreate our relationships de novo because someone(s) wanted a political "do over."

As a microcosm of everything I have shared, more specifically to the Jewish community, maintaining the geographic integrity of our district recognizes the inter-relationships the Jewish populations across the Red Bank, Long Branch, West Long Branch, Ocean Twp., Tinton Falls, Deal areas share with a legislative voice. As the "other" in the wider society, knowing that we can stand together adds to our security and more importantly, to the impact we can share in the communal conversation.

These communities are the centers of Jewish residence, commercial interaction, houses of worship and study, and places of employment. These communities also provide the hub that helps to connect the surrounding Jewish communities. Dividing this district would divide our ability to speak as a community with our legislative officials.

From:
Sent: Wednesday, February 02, 2022 12:16 PM
To: OLSaideAPPC
Subject: Submission of Written Testimony

To the legislative apportionment committee

For communities that are disadvantaged in terms of resources, and political power. What does it mean to have equitable representation? My name is Kevin Escobar and I live in Morristown, New Jersey. I am a member of Wind of the Spirit.. We are a non-profit, faith based immigrant resource center in Morris County. But even simpler than that, we are a group of immigrants, and allies fighting for our community's interests. For over 20 years we have worked to leverage our power to influence local, state, and federal legislators. We've had many victories on the state level, including Driver's Licenses for All, Wage Theft Laws, Occupational Licenses, and more. We know what it is like when folks are able to come together and their political power works. Our community is culturally rich, vibrant, hardworking, and large. We sit in one of the wealthiest areas in the country. But there are two sides to Morris County that are important to understand for the purposes of political representation. Over the past decade, Gentrification has changed Morristown fundamentally from being a small town with a mix of many races and ethnicities, to being an exhaustively expensive place filled with luxury developments versus aging and decrepit apartment stock. The memories of the community members who used to live here, having since left to other towns such as Dover, Mount Olive, and Netcong where rents are more affordable by comparison. Rents over the past 3 years in Morristown have increased in some cases by 30%. We know because we've heard from our community, as well as done the research in town halls, and on the other side, communities of color have been displaced by real-estate speculators, inflating rental prices near transit hubs like Morristown and Dover.

We cannot wait to have the full weight of our representative to confront the issues impacting our communities. These issues threaten our place within communities we have lived in for years. The true disparity is in the numbers. Median income in Morris County is high. Wealth is concentrated in areas such as Morris Township, Mendham Township, Chester and Harding Township. Much of the population in this area own homes and property. Being grouped in with these towns results in low-income housing and general social investment in general being unsurprisingly absent from the political discourse of our representatives in Trenton.

We acknowledge this commission's recent addition as a positive step in a direction towards equity, but we need more. We're not asking for any head starts, or advantages of any kind. We don't need them. Our community is well-prepared, and educated to advocate for ourselves within the political system. What we need is a fair starting point. A starting point that recognizes every ounce of our humanity.. A representation that reflects our non-diluted political power in Morris County, a political force to be reckoned with in the fight for equity and justice for immigrant communities. We ask the commission to group Morristown, Morris Plains, Wharton, Mount Olive, Rockaway township and Parsippany together in the same legislative district.

Kevin Escobar *(they/he/him)*
Board Trustee

Wind of the Spirit, Immigrant Resource Center
"education, organization, mobilization for social change"

"On a personal level, I urge this delegation to keep the Jewish populations of Red Bank, Long Branch, West Long Branch, Ocean Twp, Tinton Falls and Deal together in the same legislative district. However we redraw / reapportion legislative representation, I encourage discernment that takes into account the impact such changes will have on the inter and intra communal relationships that we share in our communities and with a unified voice with our legislative representatives. Thank you so much."